

WALL SPECIFICATION

GEMINI WALL CLADDING SYSTEM PROVIDING A 0.35W/m²K U-VALUE.

WALL FIXING ARRANGEMENT

LINER PANEL: LINER PANEL FIXED TO RAILS WITH TSC20G19 SELF-DRILLING FASTENERS AS POSITIONED (TSL36 G19 TO HOT ROLLED RAILS). ALL END LAPS TO BE SEALED WITH T-STRIP 9x3 BUTYL SEALANT AND ALL SIDE LAPS WITH T-FOIL PLUS. WHERE LINER FOAM FILLERS ARE INSTALLED, A FIXING IS REQUIRED IN EVERY PAN TO ENSURE AIR SEAL IS MAINTAINED.

SPACER SYSTEM: THE Z-BAR 36W AND PS 100 TO BE FIXED INTO RAILS WITH TTC132 OR HOT ROLLED RAILS WITH TTL145. A MINIMUM OF TWO BLOCKS AND BARS PER 1m ARE REQUIRED. BUILDINGS OVER 10m IN HEIGHT TO EAVES MAY REQUIRE A WIND PRESSURE/SUCTION CALCULATION TO DETERMINE FASTENER FREQUENCY PATTERN.

INSULATION: THE INSULATION IS INSTALLED WHERE POSSIBLE CONTINUOUSLY FROM DRIP TO EAVES. THE INSULATION IS CUT AND TUCKED UNDER THE SPACER SYSTEM AND HELD IN PLACE USING STICK PINS WHERE REQUIRED, FIRM ABUTMENTS ON ALL SIDES OF THE INSULATION ARE REQUIRED THROUGHOUT THE CONSTRUCTION.

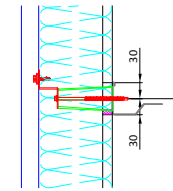
OUTER SHEET: THE OUTER PROFILE SHEET 0.5mm THICK NOMINAL TO BE FIXED TO THE TOP FLANGE OF THE Z-BARS.

FLASHINGS: ALL FLASHINGS TO BE MANUFACTURED FROM THE SAME BATCH OF MATERIAL USED TO PRODUCE THE OUTER PROFILE TO ENSURE UNIFORM WEATHERING. ALL EXTERNAL FLASHINGS ARE TO BE SEALED AND STITCHED. SIDE AND END LAPS TO BE SEALED USING T-STRIP 9x3 BUTYL SEALANT.

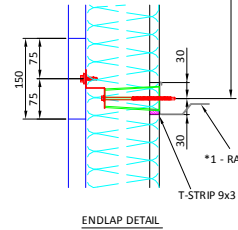
SYSTEM APPRAISAL

FIRE: DESIGNATED 'AA' TO BS476:PART 3:2004 & THE LINER PANEL IS CLASS '0' SURFACE SPREAD OF FLAME TO BS476:PART 7:1997
ACOUSTICS: THE SYSTEMS ACOUSTIC PERFORMANCE HAS BEEN TESTED TO ACHIEVE 39dB WEIGHTED NOISE REDUCTION

| MAIN FIXING | STITCHER | MAIN FIXING SINU PROFILE | STITCHER SINU PROFILE |
|-------------|----------|-----------------------------|--------------------------|
| CSC32/16 | CSS22/16 | LPHC25A11 | LPHC25S11 |



TYPICAL RAIL SPACING ≤1800mm
 (BASE RAIL SPACING OF 2200mm
 MAX PERMITTED)



ENDLAP DETAIL

THE INFORMATION CONTAINED IN THIS COMMUNICATION IS CONFIDENTIAL. IT MAY ALSO BE LEGALLY PRIVILEGED. IT IS INTENDED ONLY FOR THE STATED ADDRESSEE(S) AND ACCESS TO IT AND USE BY ANY OTHER PERSON(S) IS UNAUTHORISED. IF YOU ARE NOT AN ADDRESSEE, YOU MUST NOT DISCLOSE, COPY, CIRCULATE OR IN ANY OTHER WAY USE OR RELY UPON THE INFORMATION CONTAINED IN THIS COMMUNICATION. IF YOU HAVE RECEIVED THIS COMMUNICATION IN ERROR, PLEASE INFORM US IMMEDIATELY AND EXPUNGE ALL COPIES FROM YOUR SYSTEMS.

ALL INFORMATION ISSUED BY CA GROUP LIMITED IS SUBJECT TO CONTINUOUS DEVELOPMENT AND THE INFORMATION / DETAILS CONTAINED IN THIS COMMUNICATION ARE CURRENT AT DATE OF ISSUE. IT IS THE ADDRESSEE'S RESPONSIBILITY TO ASCERTAIN FROM CA GROUP LIMITED THAT THE INFORMATION CONTAINED IN THIS COMMUNICATION HAS NOT CHANGED AT THE TIME OF USE BY THE ADDRESSEE.

BSI
 ISO 9001
 FS10416

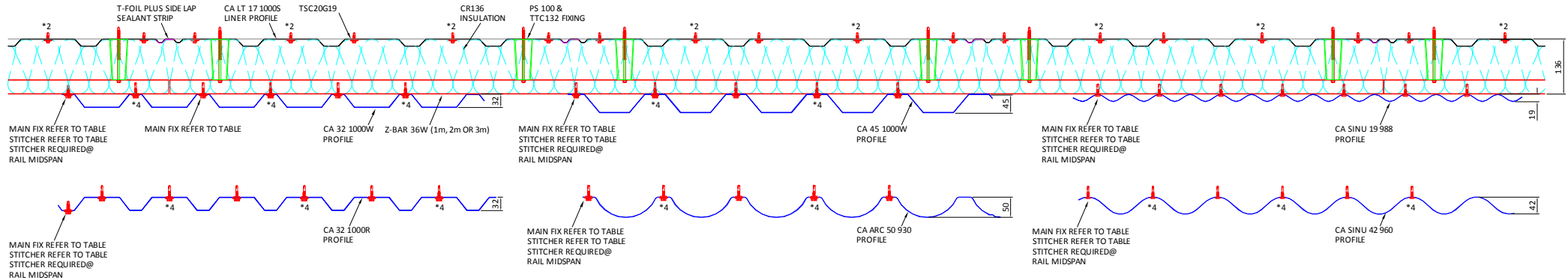
DRAWINGS, DETAILS, f -FACTORS AND W-VALUES ARE COVERED BY COPYRIGHT AND ARE OWNED IN FULL BY:
 CA GROUP LIMITED
 COPELAND ROAD, EVENWOOD INDUSTRIAL ESTATE,
 EVENWOOD, CO. DURHAM, DL14 9SF

CA BUILDINGS PRODUCTS' ROOF AND WALL CLADDING SYSTEMS TO BE INSTALLED TO SECONDARY STEELWORK IN ACCORDANCE WITH SCI PUBLICATION '9346 - BEST PRACTICE FOR THE SPECIFICATION AND INSTALLATION OF METAL CLADDING AND SECONDARY STEELWORK.

CE ALL CA BUILDINGS PRODUCTS' PROFILES ARE CE MARKED IN COMPLIANCE WITH EN 14782: 2006

*1 REFER TO CABP TECHNICAL NOTE TN-33 'THIN GAUGE PURLINS' FOR MINIMUM THICKNESSES OF PURLINS AND CLADDING RAILS.

*2 ADDITIONAL LINER FIXING REQUIRED AT EAVES/HIPS & DRIP (LINER FILLER LOCATIONS)
 *4 ADDITIONAL FASTENERS AT HEAD/EAVES & EXTERNAL SHEET ENDLAPS



REFER TO GE-WG INSTALLATION GUIDE FOR FIXING & SEQUENCE PROCEDURES



CA Building Products
 Evenwood Industrial Estate
 Copeland Road, Evenwood
 Co. Durham, DL14 9SF
 T: 01388 834242 F: 01388 834711
 E: technical@cagroup.ltd.uk
 W: www.cagroup.ltd.uk

TITLE:
**GEMINI STANDARD WALL BUILD-UP
 & EXTERNAL VERTICAL PROFILE OPTIONS**

CA BUILDING PRODUCTS 0.35W/m²K U-VALUE WALL SPECIFICATION

| REVISIONS: |
|------------|
| |
| |
| |
| |
| |
| |
| |

| | |
|--------------------------------|----------------------------|
| DRAWN M Forrester | CHECKED L Davies |
| DATE February 2009 | SCALE NTS |
| DRAWING No GE-SDV-01 | REV A |