

THE INFORMATION CONTAINED IN THIS COMMUNICATION IS CONFIDENTIAL. IT MAY ALSO BE LEGALLY PRIVILEGED. IT IS INTENDED ONLY FOR THE STATED ADDRESSEE(S) AND ACCESS TO IT AND USE BY ANY OTHER PERSON(S) IS UNAUTHORISED. IF YOU ARE NOT AN ADDRESSEE, YOU MUST NOT DISCLOSE, COPY, CIRCULATE OR IN ANY OTHER WAY USE OR RELY UPON THE INFORMATION CONTAINED IN THIS COMMUNICATION. IF YOU HAVE RECEIVED THIS COMMUNICATION IN ERROR, PLEASE INFORM US IMMEDIATELY AND EXPUNGE ALL COPIES FROM YOUR SYSTEMS.

ALL INFORMATION ISSUED BY CA GROUP LIMITED IS SUBJECT TO CONTINUOUS DEVELOPMENT AND THE INFORMATION / DETAILS CONTAINED IN THIS COMMUNICATION ARE CURRENT AT DATE OF ISSUE. IT IS THE ADDRESSEE'S RESPONSIBILITY TO ASCERTAIN FROM CA GROUP LIMITED THAT THE INFORMATION CONTAINED IN THIS COMMUNICATION HAS NOT CHANGED AT THE TIME OF USE BY THE ADDRESSEE.



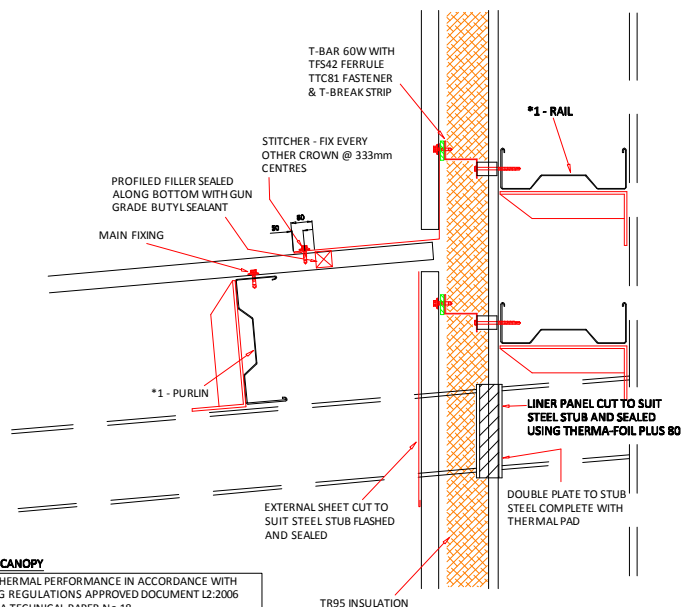
DRAWINGS, DETAILS, *f*-FACTORS AND  $\psi$ -VALUES ARE COVERED BY COPYRIGHT AND ARE OWNED IN FULL BY; CA GROUP LIMITED  
 COPELAND ROAD, EVENWOOD INDUSTRIAL ESTATE, EVENWOOD, CO. DURHAM, DL14 9SF

CA BUILDINGS PRODUCTS' ROOF AND WALL CLADDING SYSTEMS TO BE INSTALLED TO SECONDARY STEELWORK IN ACCORDANCE WITH SCI PUBLICATION '2346 - BEST PRACTICE FOR THE SPECIFICATION AND INSTALLATION OF METAL CLADDING AND SECONDARY STEELWORK'.

**CE** ALL CA BUILDINGS PRODUCTS' PROFILES ARE CE MARKED IN COMPLIANCE WITH EN 14782: 2006

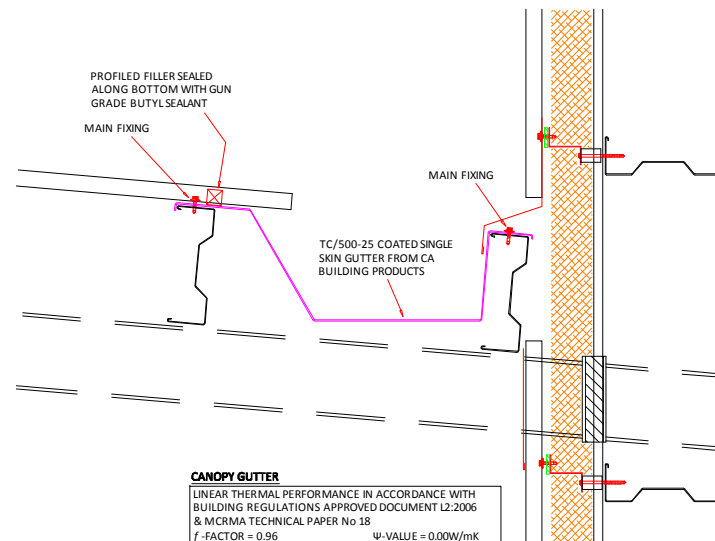
\*1 REFER TO CABP TECHNICAL NOTE TN-33 'THIN GAUGE PURLINS' FOR MINIMUM THICKNESSES OF PURLINS AND CLADDING RAILS.

REFER TO RELEVANT SPECIFICATION DRAWING FOR APPROPRIATE MAIN FIX AND STITCHER REFERENCE RELATIVE TO GUARANTEE REQUIREMENTS.



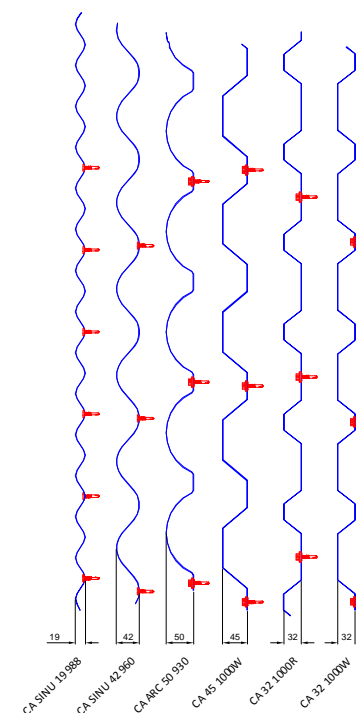
**LEAN-TO CANOPY**  
 LINEAR THERMAL PERFORMANCE IN ACCORDANCE WITH BUILDING REGULATIONS APPROVED DOCUMENT L2:2006 & MCRMA TECHNICAL PAPER No 18  
 $f$ -FACTOR = 0.96       $\psi$ -VALUE = 0.00W/mK  
 NOTE: DOES NOT INCLUDE STUB STEEL

NOTE:  
 ALL STUB STEELWORK PENETRATIONS MUST BE CALCULATED SEPARATELY TO PROJECT SPECIFIC DETAILS WHETHER THERMALLY BROKEN OR NOT



**CANOPY GUTTER**  
 LINEAR THERMAL PERFORMANCE IN ACCORDANCE WITH BUILDING REGULATIONS APPROVED DOCUMENT L2:2006 & MCRMA TECHNICAL PAPER No 18  
 $f$ -FACTOR = 0.96       $\psi$ -VALUE = 0.00W/mK  
 NOTE: DOES NOT INCLUDE STUB STEEL

NOTE:  
 ALL STUB STEELWORK PENETRATIONS MUST BE CALCULATED SEPARATELY TO PROJECT SPECIFIC DETAILS WHETHER THERMALLY BROKEN OR NOT



CA Building Products  
 Evenwood Industrial Estate  
 Copeland Road, Evenwood  
 Co. Durham, DL14 9SF  
 T: 01388 834242 F: 01388 834711  
 E: technical@cagroup.ltd.uk  
 W: www.cagroup.ltd.uk

TITLE:  
**TWIN-THERM® FIREWALL - VERTICAL EXTERNAL PROFILE  
 LEAN-TO CANOPY & CANOPY GUTTER ABUTMENT DETAILS**

CA BUILDING PRODUCTS FIREWALL DETAILS 0.35W/m<sup>2</sup>K U-VALUE

REVISIONS:	DRAWN M Forrester	CHECKED L Davies
	DATE August 2008	SCALE NTS
	DRAWING No TT-DFV-06	REV A