

THE INFORMATION CONTAINED IN THIS COMMUNICATION IS CONFIDENTIAL. IT MAY ALSO BE LEGALLY PRIVILEGED. IT IS INTENDED ONLY FOR THE STATED ADDRESSEE(S) AND ACCESS TO IT AND USE BY ANY OTHER PERSON(S) IS UNAUTHORISED. IF YOU ARE NOT AN ADDRESSEE, YOU MUST NOT DISCLOSE, COPY, CIRCULATE OR IN ANY OTHER WAY USE OR RELY UPON THE INFORMATION CONTAINED IN THIS COMMUNICATION. IF YOU HAVE RECEIVED THIS COMMUNICATION IN ERROR; PLEASE INFORM US IMMEDIATELY AND EXPUNGE ALL COPIES FROM YOUR SYSTEMS.

ALL INFORMATION ISSUED BY CA GROUP LIMITED IS SUBJECT TO CONTINUOUS DEVELOPMENT AND THE INFORMATION / DETAILS CONTAINED IN THIS COMMUNICATION ARE CURRENT AT DATE OF ISSUE. IT IS THE ADDRESSEE'S RESPONSIBILITY TO ASCERTAIN FROM CA GROUP LIMITED THAT THE INFORMATION CONTAINED IN THIS COMMUNICATION HAS NOT CHANGED AT THE TIME OF USE BY THE ADDRESSEE.



DRAWINGS, DETAILS, f -FACTORS AND ψ-VALUES ARE COVERED BY COPYRIGHT AND ARE OWNED IN FULL BY; CA GROUP LIMITED
 COPELAND ROAD, EVENWOOD INDUSTRIAL ESTATE, EVENWOOD, CO. DURHAM. DL14 9SF

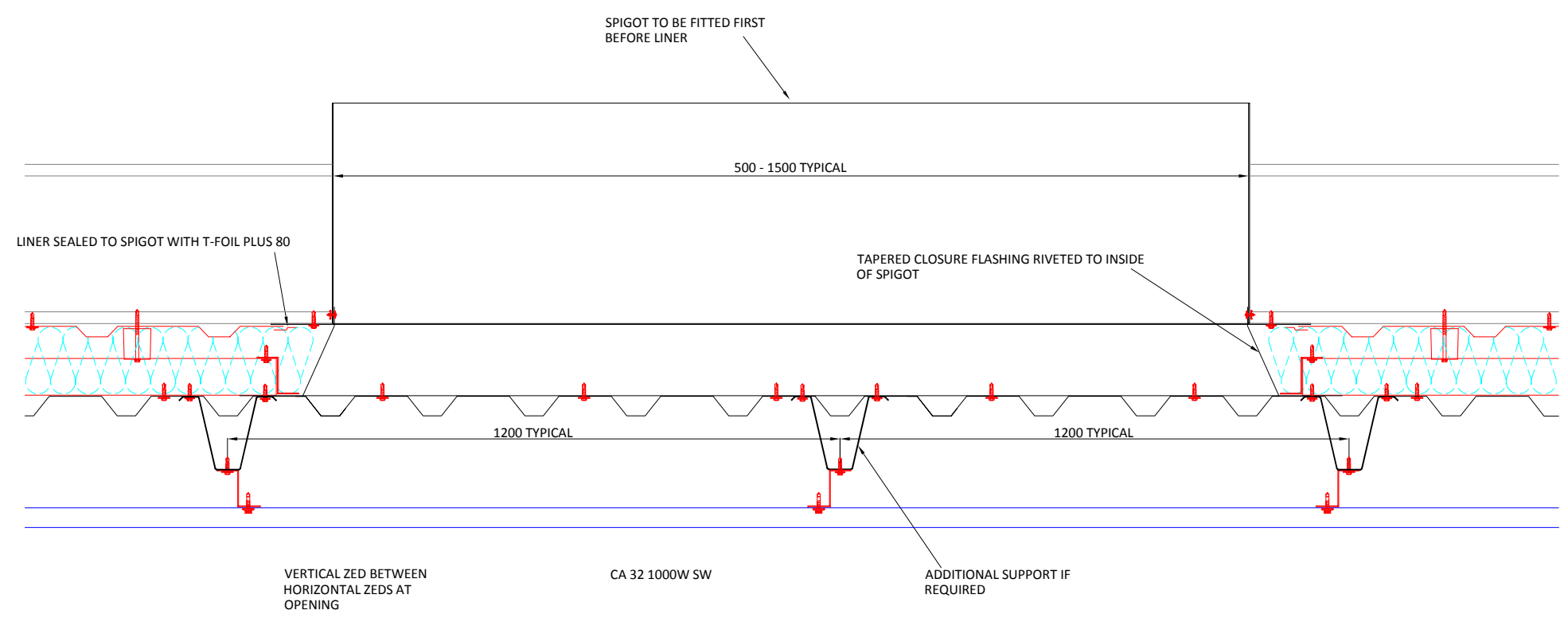
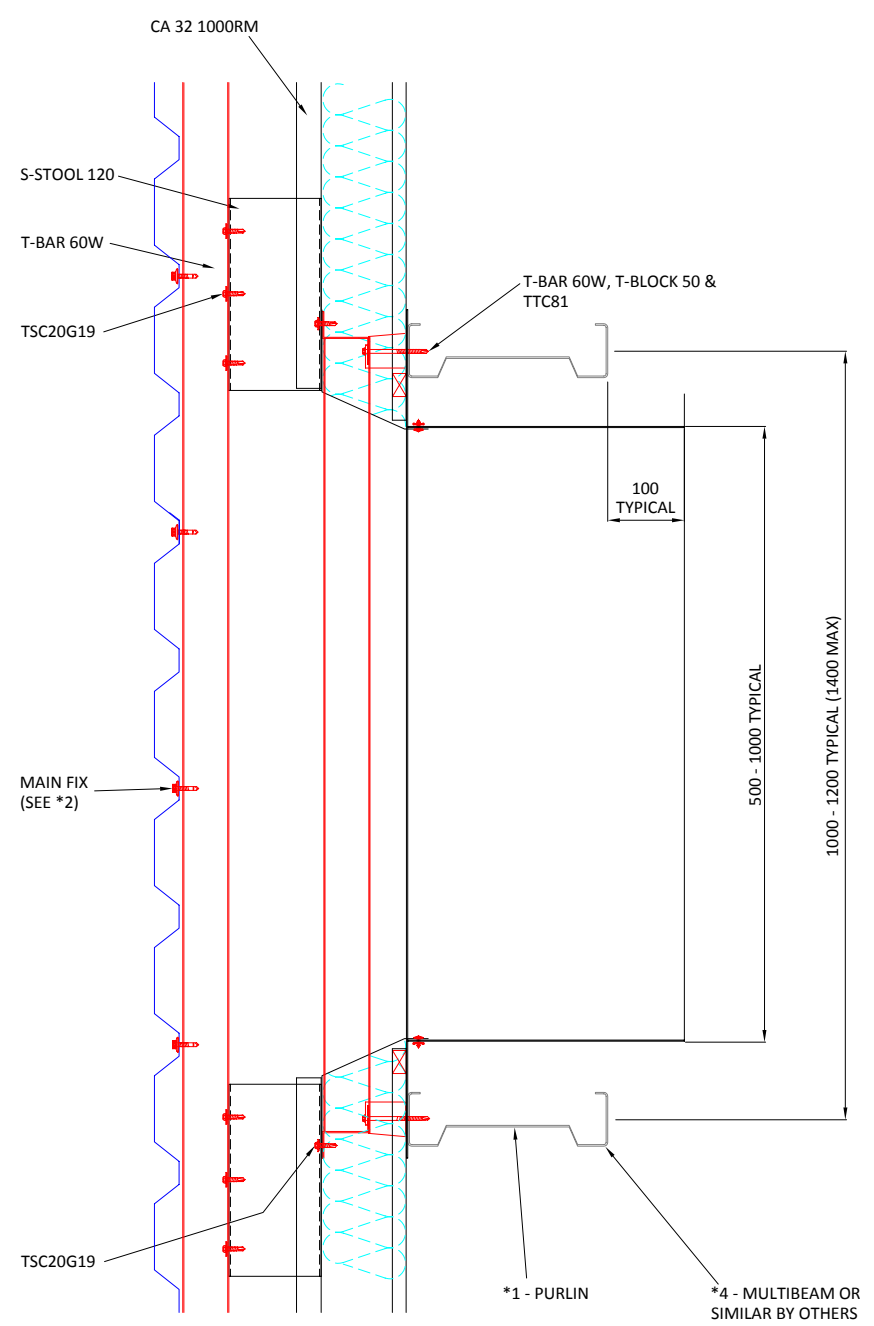
CA BUILDINGS PRODUCTS' ROOF AND WALL CLADDING SYSTEMS TO BE INSTALLED TO SECONDARY STEELWORK IN ACCORDANCE WITH SCI PUBLICATION 'P346 - BEST PRACTICE FOR THE SPECIFICATION AND INSTALLATION OF METAL CLADDING AND SECONDARY STEELWORK'.

CE ALL CA BUILDINGS PRODUCTS' PROFILES ARE CE MARKED IN COMPLIANCE WITH EN 14782: 2006

*1 REFER TO CABP TECHNICAL NOTE TN-33 'THIN GAUGE PURLINS' FOR MINIMUM THICKNESSES OF PURLINS AND CLADDING RAILS.

- *2 PLEASE REFER TO THE RELEVANT TWIN-THERM® SOLARWALL® SPECIFICATION DRAWING IN ORDER TO OBTAIN INFORMATION ON MATERIAL FINISHES AND GUARANTEE PERIODS.
- *3 THIS DRAWING IS GENERIC FOR WHATEVER BUILT UP OPTION IS USED. THE RELEVANT SPECIFICATION DRAWINGS MUST BE CONSULTED FOR THE CORRECT CAVITY AND CANOPY DEPTHS.
- *4 PLEASE REFER TO CABP TECHNICAL NOTE TN-03 'SYSTEM U-VALUES & WEIGHTS FOR SOLARWALL® SYSTEM WEIGHTS UTILISING THE TWIN-THERM® INSULATED WALL SYSTEM. IT SHOULD BE VERIFIED PRIOR TO INSTALLATION THAT THE SECONDARY / MAIN STEELWORK IS CAPABLE OF SUPPORTING THE TOTAL LOAD IMPOSED BY THE COMPLETE TWIN-THERM® SOLARWALL® SYSTEM.

REFER TO TWIN-THERM® SOLARWALL® INSTALLATION GUIDE FOR FIXING & SEQUENCE PROCEDURES.



CA Building Products
 Evenwood Industrial Estate
 Copeland Road, Evenwood
 Co. Durham. DL14 9SF
 T: 01388 834242 F: 01388 834711
 E: solarwall@cagroup.ltd.uk
 W: www.cagroup.ltd.uk

TITLE:
TWIN-THERM® SOLARWALL® PERFORATED TRANSPIRED SOLAR COLLECTOR CLADDING RAIL SPIGOT DETAIL
HORIZONTALLY LAID EXTERNAL SHEET
 CA BUILDING PRODUCTS 0.35W/m²K U-VALUE WALL SPECIFICATION

REVISIONS:
REV B - MINOR UPDATES

DRAWN	A BREWSTER
DATE	MARCH 2009
DRAWING No	SW-DDH-11

CHECKED	D YOUNG
SCALE	NTS
REV	B